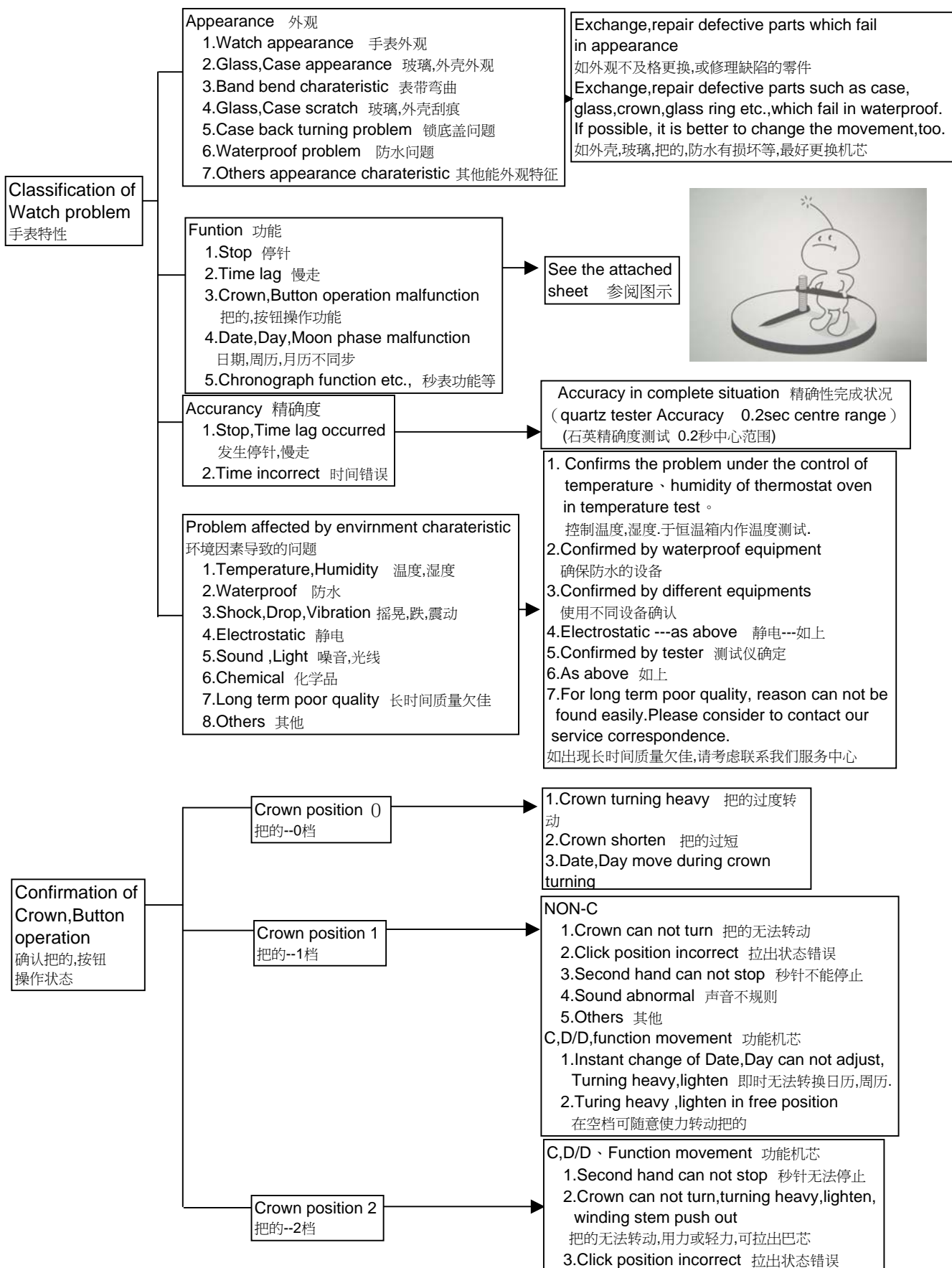
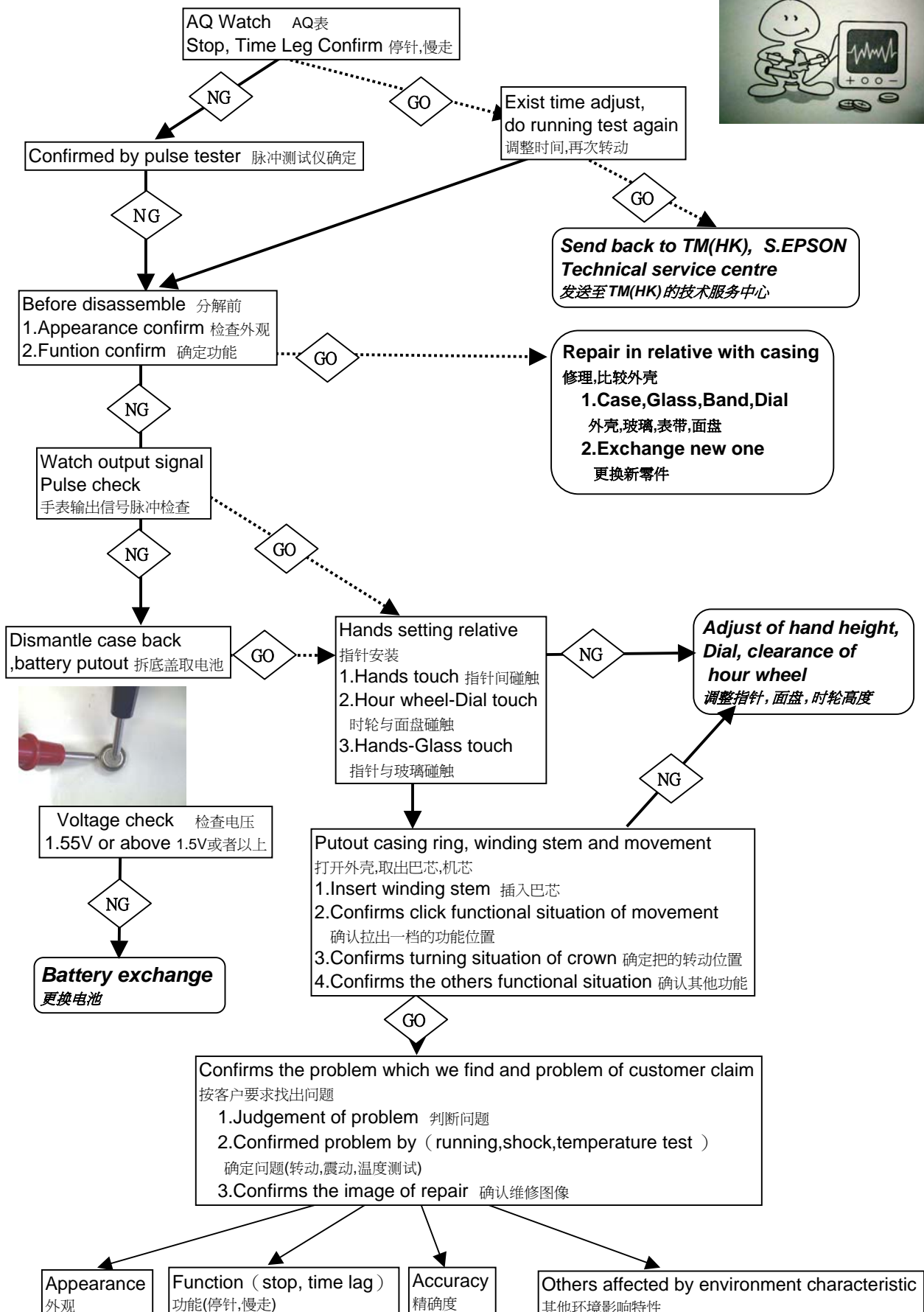


AQ Basic Repair Chart (1)


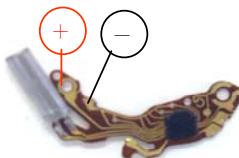

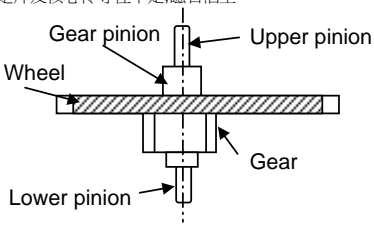



AQ Basic Repair Chart (2)



AQ Basic Repair Chart (3)

Explanation of Movement STOP and Time Delayed. 机芯停走及慢走的原因.

| Construction,position,parts 构造 | Defective charater 缺陷 | Photos |
|-----------------------------------|---|---|
| 1) Battery,Conductivity 电池,传导性 | <ul style="list-style-type: none"> Low capacity of battery (low Voltage) 电压过低 Poor conductivity of battery connection (-) and (+) 电池正负极传导性 (-) dirty Poor conductivity of battery and foil of circuit block 电池传导性及线圈受阻 | <p>Battery connection (-) dirty</p>  |
| 2) Circuit block 电路板 | <ul style="list-style-type: none"> Foil of circuit block broken 电路板断开 Poor soldering of quartz oscillator 石英振荡器焊接有缺陷 Poor bonding of IC 与IC接合欠佳 Poor conductivity of foil of circuit block and coil block 电路板及线圈传导性 Rust caused by water come in. 进水导致锈蚀 |  |
| 3) Coil block 线圈 | <ul style="list-style-type: none"> Poor resistance of coil block 线圈电阻不足 Poor conductivity of Coil block 线圈传导性不足 Coil block broken,rust,colour change,foil peel off 线圈损坏,锈蚀,变色,铂剥落 Poor conductivity of core and tape 核心及磁带传导不足 Poor pressing and bonding of wire 金属丝压合不良 Wire loose,Number of turning not enough 金属丝过短或缠绕不足 |  |
| 4) Motor 转子 | <ul style="list-style-type: none"> Poor magnetize of rotor 转子磁力不足 Rotor's gear scratch,deform,pinion bend,scratch,lack etc., 转子齿轮刮痕,变形,小齿轮弯曲,短少等 Dusty,metallic powder etc., 沾尘,金属拖力等 Deform,rust,scratch,bend of stator 变形,锈蚀,刮痕,固定片弯曲 Poor conductivity of stator and core,poor magnetize caused by dusty 固定片及核心传导性不足,磁石沾尘 |  |
| 5) Wheel relative 轮子问题 | <ul style="list-style-type: none"> Dusty,metallic powder (metal,Plastic etc.,) 沾尘,金属力(金属,塑料等) Scratch,deform,lack,come off,bend of wheel 刮痕,变形,短少,离开,轮子弯曲 Scratch,broken,bend of gear pinion 刮痕,损坏,齿轮弯曲 Wheel without clearance,position of wheel 轮子没清除,轮子位置 Contact of wheel ,well fixed 接触轮子,修理好 Lubricating of pinion is too much ,too little 润滑油点太多或太少 |  |
| 6) Click | <ul style="list-style-type: none"> Bend,shorten of winding stem 巴芯弯曲或太短 Poor shape of clutch wheel 离合轮变形不良 Setting wheel without clearance 、lubricating no good,clutch wheel 拨针轮没清除, and setting wheel do not fix in good position etc., 润滑油不良,离合轮与拨针轮没设在正确位置 Winding stem can not insert 、 it does not match with case 巴芯插入不当,没接到机芯 Poor electronic reset,short circuit 电子重设,短路 Motion of parts is no good 零件运行不良 | |
| 7) Crown turning 把的转动 | <ul style="list-style-type: none"> Turning heavy,lighten,do not have click feel,have click feel 转动时要适当使力 Winding stem take off 巴芯脱落 Broken,bend,loose,scratch of winding stem 巴芯损坏,弯曲,松动,刮痕 | |
| 8) Calendar 日历 | <ul style="list-style-type: none"> Date,day calendar without clearance,clearance too much 日历,周历没清除好 Wheels do not fixed well 转子没修好 Can not stop when crown in click 2 position 把的拉出2档时不能运行 Can not stop at sutiation of instant change of date calendar , Day driving of calendar 日历盘转动时周历盘没有即时转换 Can not instant change of Date,Day calendar 日历,周历没有转换 Gear of date calendar deform,scratch,linking,driving force etc., 日历盘变形,刮痕,连接,运行压力 Calendar without driving power 日历无电力驱动 | |
| Accuracy problem 精确度问题 | <ul style="list-style-type: none"> Investation of reason of defects 缺点原因 1.Low capacity of battery 电池容量过低 2.Circuit block no good 电路板不良 3.It needs to confirm the envirnment condition 受环境条件 <p>*Month accuracy ±20 sec/month 月精确度 ±20秒/月 ±20/30day = ±0.667sec/day ±20/30天 = ±0.667秒/天</p> <p>*Actually ,quartz oscillator will be affected by temperature,Center range of accuracy will not be 0 second. It will be ±0.2 sec/day. 实际上,石英振荡器受到温度影响,精确度集中排列未到0秒,只能到0.2秒/天.</p> | <ul style="list-style-type: none"> Use AQ tester to check the accuracy correctly 使用AQ测试仪检测精确度 |