

# 2 Hands, 3 Hands Movement

# 1/2 Instructions

## Features

- ◆ Hour, Minute and Second Hands



Cal.	2 hands	3 hands	Size	Diameter		Height	Battery	Battery life Approx.
				Outside	Casing			
YL50	○		Small	Ø9.5 x 9.00mm (3H-9H)	8.50mm (3H-9H)	2.78mm	SR512SW	2 years
YL60	○		4 3/4"	Ø13.50mm x 10.80mm (3H-9H)	Ø13.00mm x 10.80mm (3H-9H)	2.09mm	SR416SW	3 years
YL61		○				2.39mm	SR421SW	2 years
VX00	○		4 3/4"	14.50mm(12H-6H) x 10.80mm (3H-9H)	13.75mm (12H-6H) x 10.80mm (3H-9H)	2.09mm	SR516SW	3 years
VX01		○				2.39mm	SR521SW	2 years
VX10	○		5 1/2"	15.55mm (12H-6H) x 13.00mm (3H-9H)	15.15mm (12H-6H) x 11.80mm (3H-9H)	2.19mm	SR516SW	3 years
VX11		○				2.49mm	SR521SW	2 years
VX50	○		6 x 8"	15.30mm (3H-9H) x 18.20 (12H-6H)	15.30mm (3H-9H) x 17.80mm (3H-6H)	2.16mm	SR616SW	5 years
VX51		○				2.30 mm	SR621SW	3 years
Y120E	○		6 x 8"	15.30mm (3H-9H) x 18.20 (12H-6H)	15.30mm (3H-9H) x 17.80mm (3H-6H)	2.99mm	SR626SW	2 years
Y120G	○							4 years
Y121E		○	6 x 8"	15.30mm (3H-9H) x 18.20 (12H-6H)	15.30mm (3H-9H) x 17.80mm (3H-6H)	2.99mm	SR626SW	2 years
Y121G		○						4 years
Y127		○	6 x 8"	15.30mm (3H-9H) x 18.20 (12H-6H)	15.30mm (3H-9H) x 17.80mm (3H-6H)	2.99mm	SR626SW	1.5 years
AL20	○							2 years
AL21		○	6 x 8"	15.30mm (3H-9H) x 18.20 (12H-6H)	15.30mm (3H-9H) x 17.80mm (3H-6H)	2.99mm	SR626SW	2 years
AL35		○						
AL55		○	6 x 8"	15.30mm (3H-9H) x 18.20 (12H-6H)	15.30mm (3H-9H) x 17.80mm (3H-6H)	2.99mm	SR626SW	2 years
YR67		○						



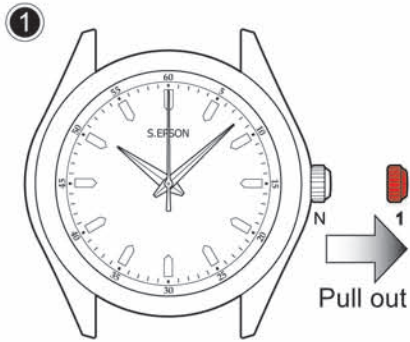
**S.EPSON Products**

JAPAN TECHNOLOGY & QUALITY

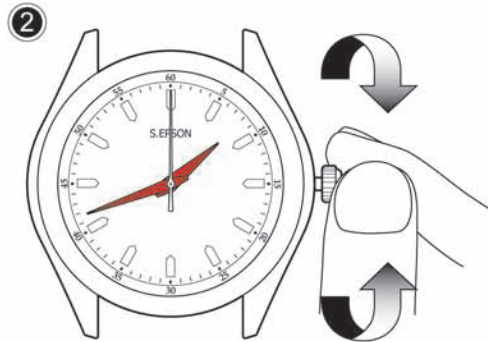
[www.timemodule.com](http://www.timemodule.com)

## 2 Hands, 3 Hands Movement

### How to Set Time:

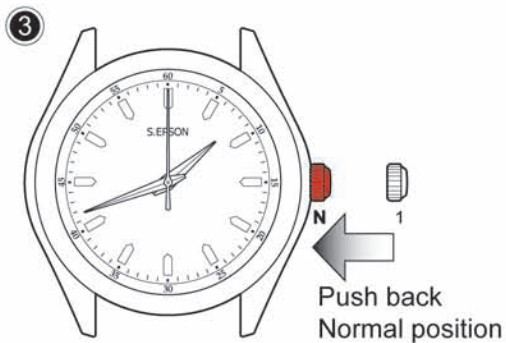


- If your watch is three hands type, pull crown out when the second hand is at the 12 o'clock position.



- Turn the crown to set the time.

*Note: When setting the minute hand, advance it 4 to 5 minutes ahead of the desired time and then turn it back to the exact time.*



- Push crown back to normal position. See the second hand begins to run.

