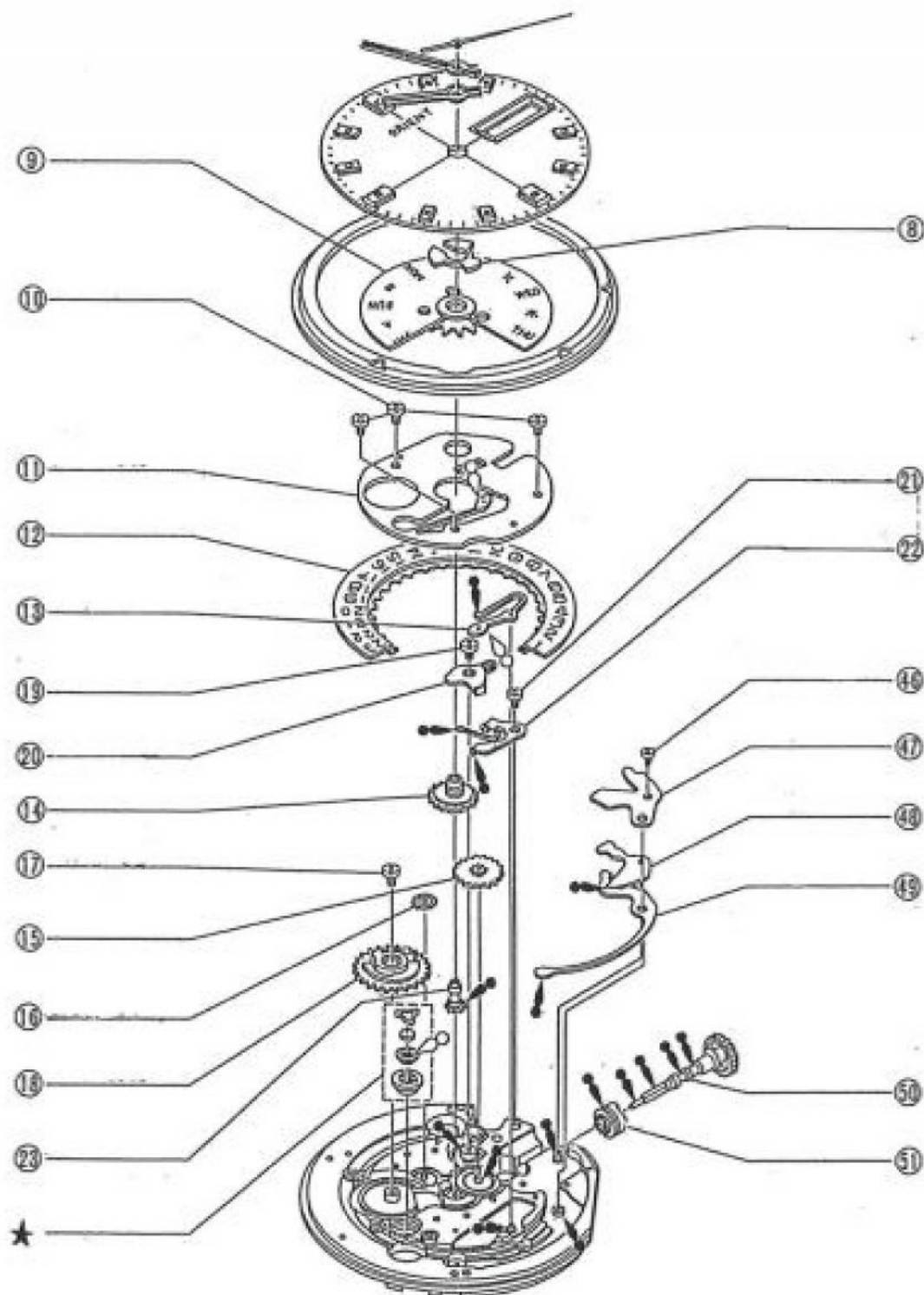


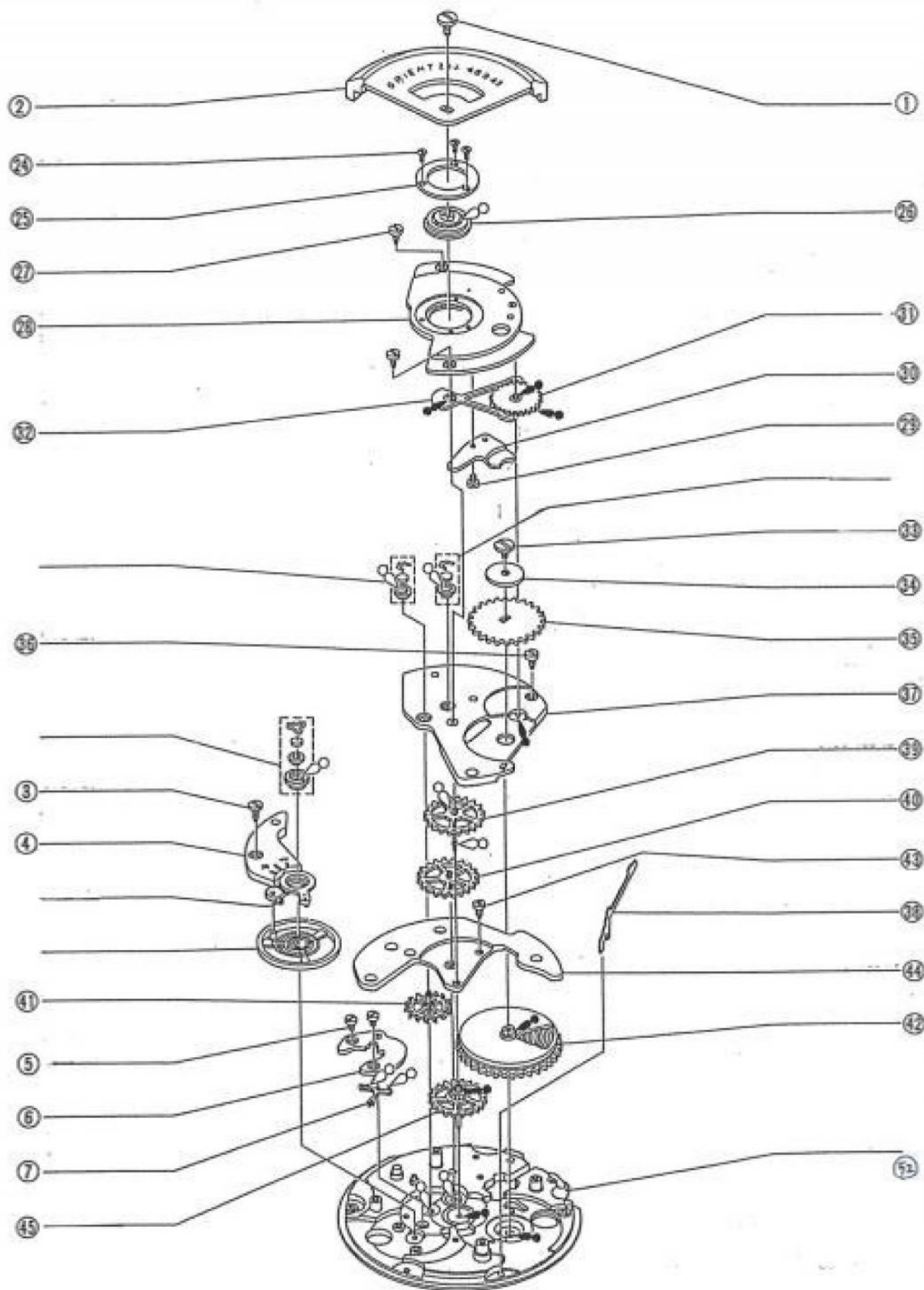
# CAL. 46943 MOVEMENT EXPANDED VIEW 1/2

- Disassembly and assembly procedure numbers correspond to the numbers given in Notes on Disassembly and Assembly



★ Center wheel <No. 23 > is supplied together with cannon pinion

CAL. 46943 MOVEMENT EXPANDED VIEW 2/2





# Cal. 46943 Movement parts list

CAL	NO	PARTS CODE	PARTS NAME	CAL	NO	PARTS CODE	PARTS NAME
46943	1	012439	OSCILLATING WEIGHT SCREW	46943	31	605046941	TRANSMISSION WHEEL
46943	2	600046943	OSCILLATING WEIGHT	46943	32	620031743	PAWL LEVER
46943	3	012421H	BALANCE BRIDGE SCREW	46943	33	012422	RATCHET WHEEL SCREW
46943	4	170146940	BALANCE BRIDGE	46943	34	626031743	PAWL LEVER GUIDE
46943	5	012175	PALLET BRIDGE SCREW	46943	35	400046941	RATCHET WHEEL
46943	6	160046940	PALLET BRIDGE	46943	36	012421	BARREL AND TRAIN WHEEL BRIDGE SCREW
46943	7	300846940	PALLET FORK	46943	37	140046943	BARREL AND TRAIN WHEEL BRIDGE
46943	8	900046940	DAY INDICATOR SPRING CLIP	46943	38	401146943	CLICK
46943	9		*DAY INDICATOR	46943	39	240046940	SECOND WHEEL
46943	10	012172H	DATE INDICATOR MAINTAINING PLATE SCREW	46943	40	230046941	THIRD WHEEL
46943	11	516046943	DATE INDICATOR MAINTAINING PLATE	46943	41	250046941	ESCAPE WHEEL
46943	12		*DATE INDICATOR	46943	42	214046940	MOVEMENT BARREL ( WITH MAINSPRING )
46943	13	517046940	DATE JUMPER	46943	43	012461	CENTER WHEEL BRIDGE SCREW
46943	14	420146940	HOUR WHEEL	46943	44	120046943	CENTER WHEEL BRIDGE
46943	15	423046940	MINUTE WHEEL	46943	45	224046940	CENTER WHEEL ( WITH CANNON PINNION )
46943	16	570146940	INTERMEDIATE DATE WHEEL	46943	46	012461	YOKE HOLDER SCREW
46943	17	012172H	DATE INDICATOR DRIVING WHEEL SCREW	46943	47	407046940	YOKE HOLDER
46943	18	510046943	DATE INDICATOR DRIVING WHEEL	46943	48	410046940	SETTING LEVER
46943	19	012172H	DAY CORRECTOR SCREW	46943	49	404046940	YOKE
46943	20	548046943	DAY CORRECTOR	46943	50	911469480	WINDING STEM
46943	21	012172H	OPERATING LEVER SCREW	46943	51	427046940	SLIDING PINION
46943	22	530046943	OPERATING LEVER	46943	52	100046940	MAIN PLATE
46943	23	224046940	CENTER WHEEL ( WITH CANNON PINNION )	46943			
46943	24	012423	BALL BEARING HOLDER SCREW	46943			
46943	25	623031743	BALL BEARING HOLDER	46943			
46943	26	610246941	BALL BEARING	46943			
46943	27	012421	AUTOMATIC TRAIN BRIDGE SCREW	46943			
46943	28	190046943	AUTOMATIC TRAIN BRIDGE	46943			
46943	29	012012H	TRANSMISSION WHEEL COVER SCREW	46943			
46943	30	624046941	TRANSMISSION WHEEL COVER	46943			