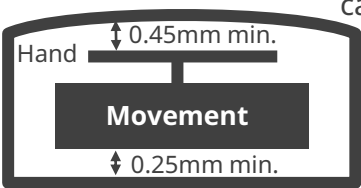
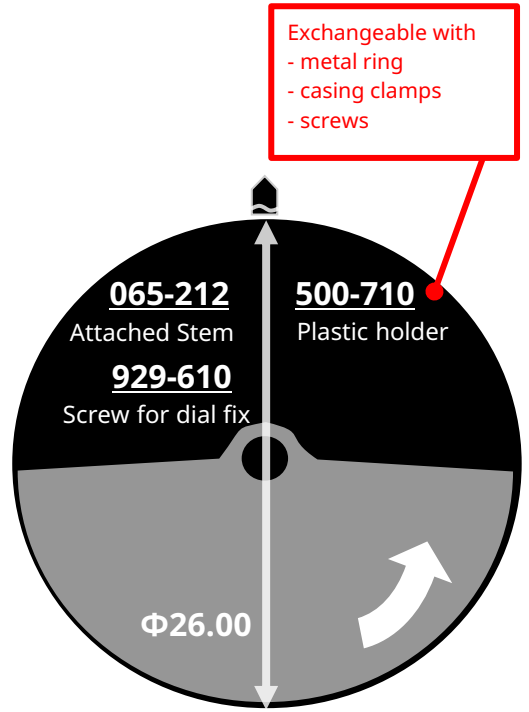
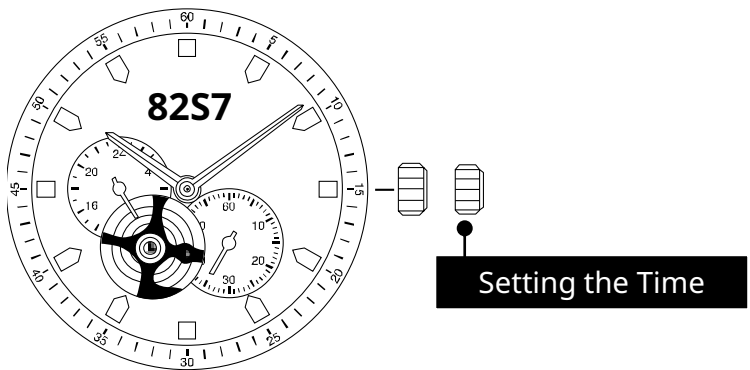
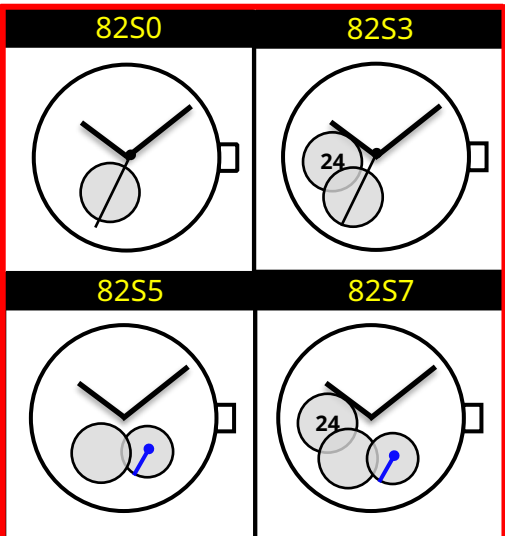
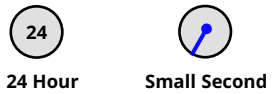


**82S0 82S3 82S5 82S7**

Size <ligne>	11 ½'''
Height <mm>	5.67
Accuracy <per Day>	-20 ~ +40 sec
Posture Difference	(under) 50 sec
Running Time	(more than) 42 hours
Vibration Frequency <per Hour>	(vibration) 21600
Clearance	 <p>Hand <math>\updownarrow</math> 0.45mm min. Movement <math>\updownarrow</math> 0.25mm min.</p> <p>Clearance changes subject to the glass, case structure, and the length of the hand.</p>
Jewels	21 pcs
Lift Angle	49 degree
Original Package	100 pcs



Gilt Version Available



# INFORMATION

## Time measurement & Winding

### Mechanical

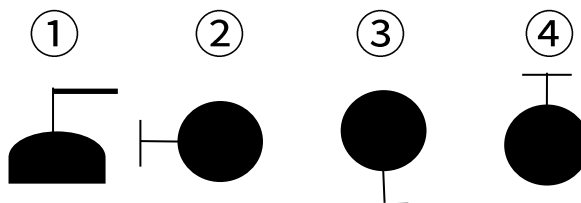
#### Accuracy

Measure within lapse of 10~60 minutes from full winding with ① posture.

#### Posture difference

Measure accuracy in below ①~④ postures.

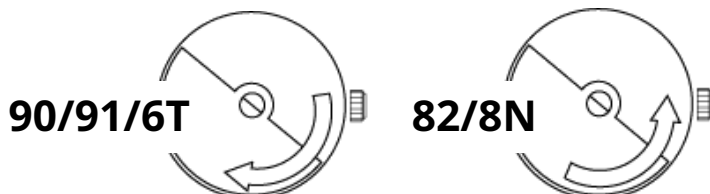
- ① Dial side up
- ② 6 o'clock side up
- ③ 9 o'clock side up
- ④ 3 o'clock side up



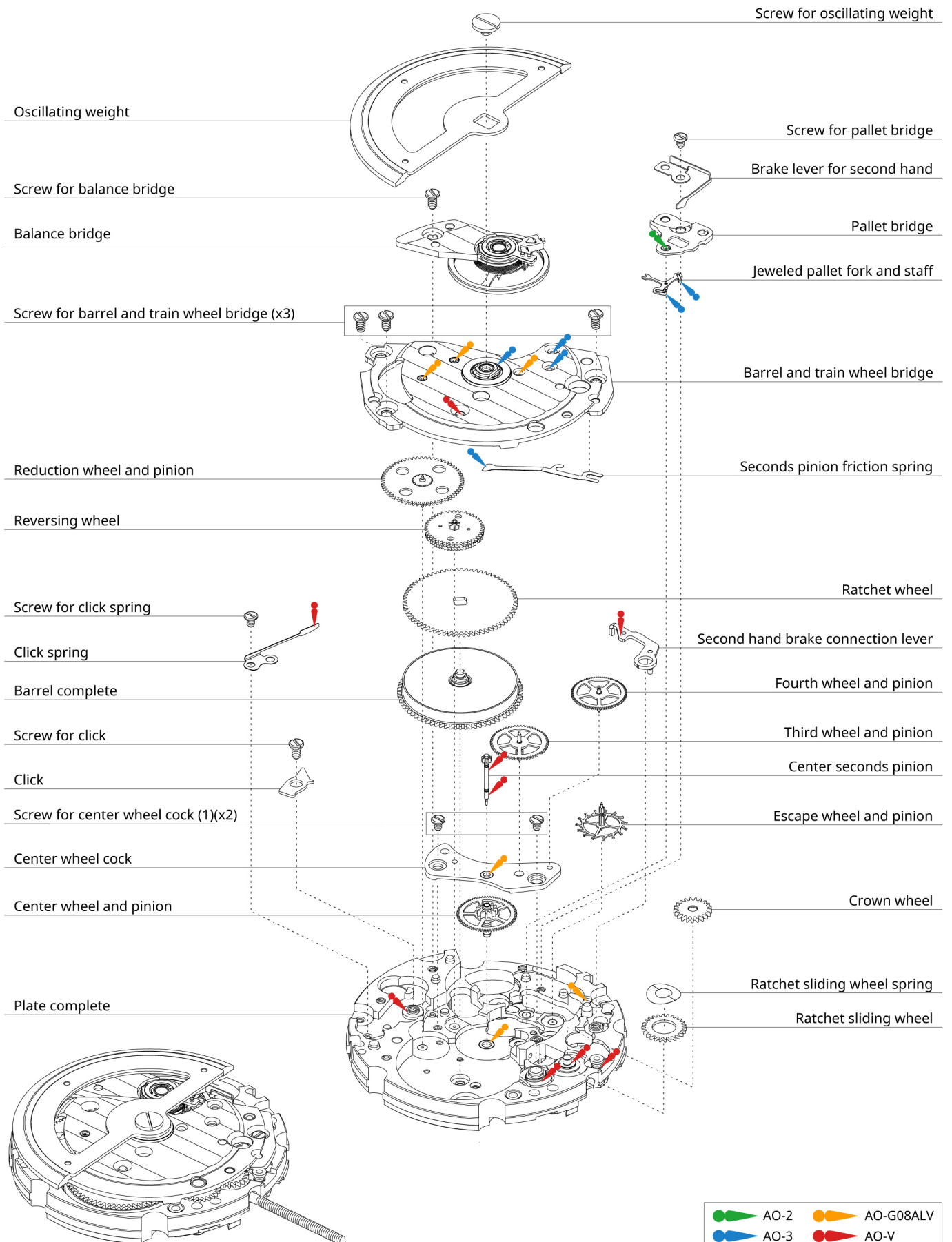
#### ■ To make full-winded

90 / 91	Turn the crown 40 times
82 / 8N	Turn the crown 40 times
6T	Turn the crown 20 times

#### ■ Winding direction



## Assembly - Disassembly chart for Cal. 82S3



## Assembly - Disassembly chart for Cal. 82S3

