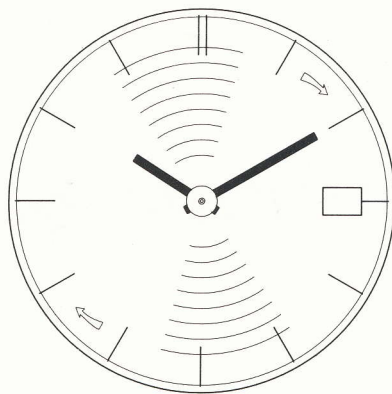
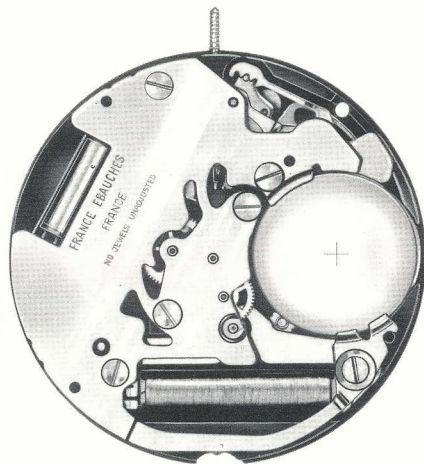




# FRANCE ÉBAUCHES

10/1/2'''



**FE 7930 H-M-S**

**FE 7931 H-M-S-D**

**H = 3,70 mm**

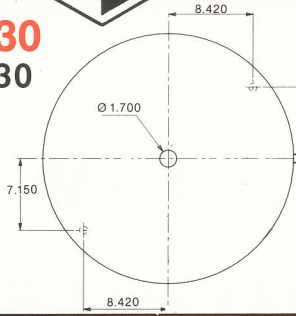
**MOUVEMENT QUARTZ - COUPLE RENFORCÉ  
QUARZWERK - ERHOEHTES KRAFTMOMENT  
QUARZ MOVEMENT - HIGHER TORQUE**

| CARACTÉRISTIQUES<br>TECHNIQUES   | TECHNICAL DATA  | TECHNISCHE DATEN  | 技术资料   | mm 毫米  |
|--|---|---|--|--|
| <b>Cage</b><br>Dimensions totales<br>Dimensions encageage<br>Hauteur du filet<br>Hauteur sur tige<br>Hauteur maximum | <b>Frame</b><br>Overall dimensions<br>Casing dimensions<br>Height et bead<br>Height at stem<br>Maximum height | <b>Gestell</b><br>Gesamte-Abmessungen<br>Gehäuse-Passung<br>Höhe am Wulst<br>Höhe an der Welle<br>Maximale Höhe | <b>外壳 (框架)</b><br>总直径<br>外壳直径<br>表壳饰高度<br>把芯高度<br>最大高度 | <b>Cal. 7930-7931</b><br>23,900<br>23,300<br>1,100<br>1,200<br>3,700 |
| <b>Tige de mise à l'heure</b><br>Diamètre du filetage  | <b>Hand-setting stem</b><br>Threading diameter  | <b>Stellwelle</b><br>Gewinddurchmesser  | <b>机芯止动杆</b><br>把芯螺纹直径                                 | 0,900  |
| <b>Résonateur</b><br>Fréquence   | <b>Resonator</b><br>Frequency   | <b>Resonator</b><br>Frequenz  | <b>谐振器</b><br>共振荡回声率                                   | 32.768 Hz  |
| <b>Moteur</b><br>Nombre d'impulsions<br>par minute   | <b>Motor</b><br>Number of impulses<br>p/minute  | <b>Motor</b><br>Impulszahl<br>p/Minute  | <b>电动机</b><br>驱脉冲 次/分                                  | 120  |
| <b>Exécution : 0 rubis</b>   | <b>Version : 0 jewel</b>  | <b>Ausführung : 0 Stein</b>   | <b>型式: 0 钻 · 宝石</b>                                    |  |

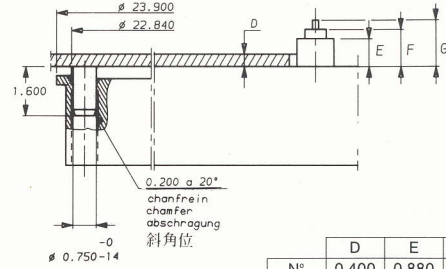
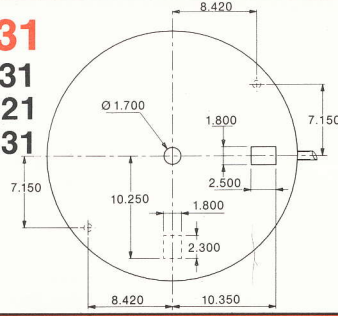


# CADRAN - DIAL - ZIFFERBLATT 錶盤

**7930**  
**9930**



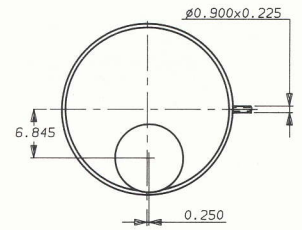
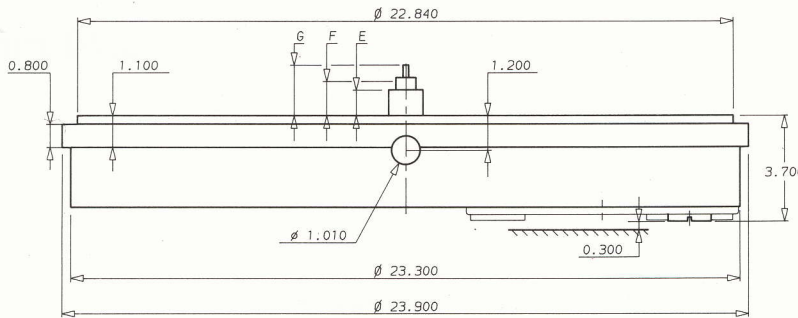
**7931**  
**9931**  
**7121**  
**10031**



|    |       |       |       |       |
|----|-------|-------|-------|-------|
|    | D     | E     | F     | G     |
| N° | 0.400 | 0.880 | 1.330 | 1.770 |

## BOITES - CASING - EINSCHALEN - 錶殼

**7930**  
**7931**



## AIGUILLAGE - HANDFITTING - ZEIGERSETZEN - 錶針裝配

| Cal. | * | A     | B     | C     | E     | F     | G     |
|------|---|-------|-------|-------|-------|-------|-------|
| 7930 | 1 | 1,220 | 2,230 | 4,770 | 0,880 | 1,330 | 1,770 |
| 7931 |   | 1,220 | 2,230 | 4,770 | 0,880 | 1,330 | 1,770 |

● Exécution 1 Normale

● Execution 1 Normal

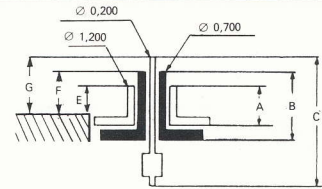
● Ausführung 1 Normal

\* 型式 1. 正常

Cadran d'épaisseur  
Dial thickness

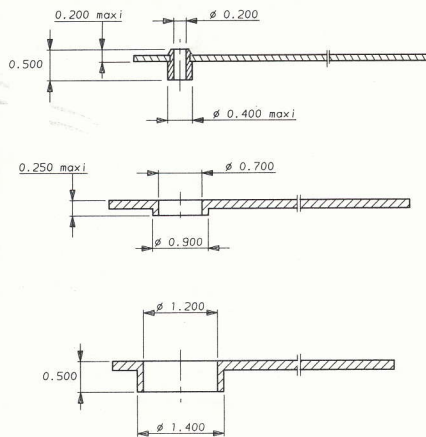
Zifferblattdicke  
錶盤厚度

H = 0,400

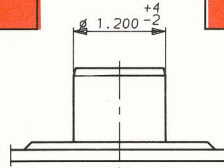


**AIGUILLES**  
**HANDS**

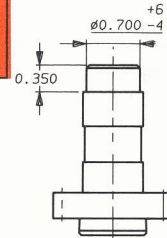
**ZEIGER**  
**指針**



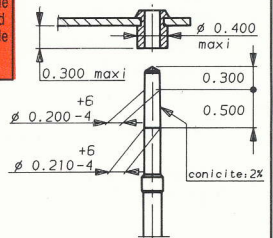
Roue des heures  
Hour wheel  
Stundenrad  
時輪



Chaussée  
Cannon pinion  
Minutenrohr  
分輪



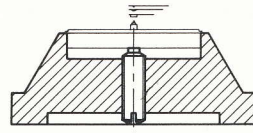
Seconde  
Second  
Sekunde  
秒



Attention : Chassage des 3 aiguilles, utiliser un porte-pièce à vis (voir schéma)  
Notice : for driving in of 3 hands use movement holder with screw (see picture).

Achtung : zum Einpressen von 3 Zeigern verwenden, sie einen Werkhalter mit Stuetzschraube (nach Skizze).

注意：採用機芯托和螺絲來裝針（如圖示）

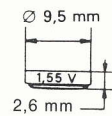


**Piles**  
**Battery**

**Batterie**  
**電池**

**CONTRÔLES - TESTS**  
**KONTROLLE - 檢驗**

UCAR 395  
RW 395  
VARTA 395  
RENATA 395  
SR 926 SW

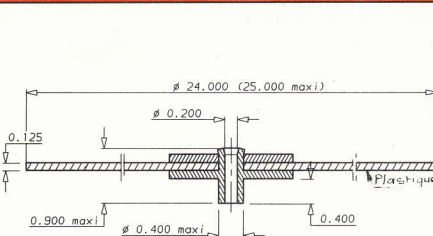


**Voir documentation 9931**  
**See documentation for 9931**  
**Siehe Dokumentation für 9931**

詳見 9931 號文件

Indicateur de seconde  
Second indicator

Sekundenanzeiger



Fournitures particulières

Special parts

Sondertelle

零件 名稱

|           |          |                                |                            |                           |         |
|-----------|----------|--------------------------------|----------------------------|---------------------------|---------|
| 10.048.47 | 110      | Pont de rouage                 | Train wheel bridge         | Raderwerbrücke            | 系列夾板    |
| 10.513    | 4.000    | Module électronique            | Electronic module          | Elektronik-Baugruppe      | 電子表機芯   |
| 20.570    | 4.929    | Pile                           | Battery                    | Batterie                  | 電池      |
| 20.850    | 4.211    | Rotor                          | Rotor                      | Rotor                     | 轉子      |
| 30.012    | 203      | Roue intermédiaire             | Intermediate wheel         | Zwischenrad               | 中間輪     |
| 30.027    | 227      | Roue de seconde                | Second wheel               | SSekundenrad              | 二輪      |
| 31.083    | 242      | Chaussée avec entraineur       | Cannon pinion with driver  | Minutenrohr mit Mitnehmer | 帶動齒輪    |
| 51.600    | 4.400    | Bride de fixation de pile      | Battery clamp              | Batteriehaltefeder        | 電池片螺釘戒指 |
| 80.263    |          | Rondelle de maintien           | Maintaining washer         | Haltescheibe              | 托簧螺釘    |
| 20.761.01 | 54.401   | Vis de bride +                 | Bridle + screw             | Schraube der Bügel +      | 附加電池片螺釘 |
| 20.761.02 | 54.401/1 | Vis de verrouillage de bride + | Bolting screw for bridle + | Bügelhalteschraube        |         |
| 20.763.01 | 54.402   | Vis de contact                 | Contact screw              | Kontaktschraube           | 接觸螺釘    |

Autres pièces : voir document 9931

Other parts : see documentation for 9931

Andere Teile : Siehe Dokumentation für 9931

其餘零件，詳見 9931 號文件