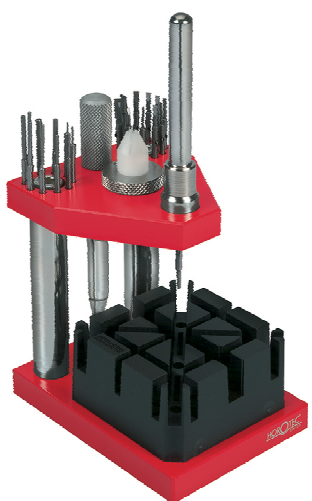


10



BRACELET PRESSES

10 - 2

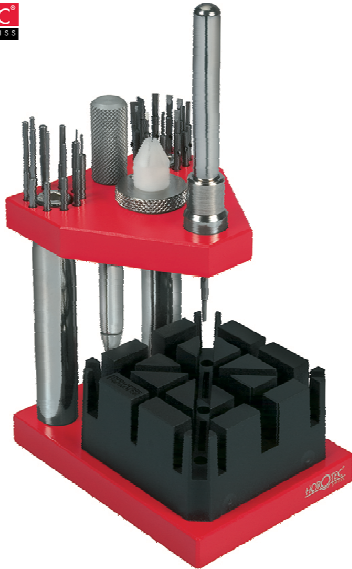
BRACELET TOOLS

10 - 3

SPRING BARS TOOLS

10 - 9

BRACELET PRESSES

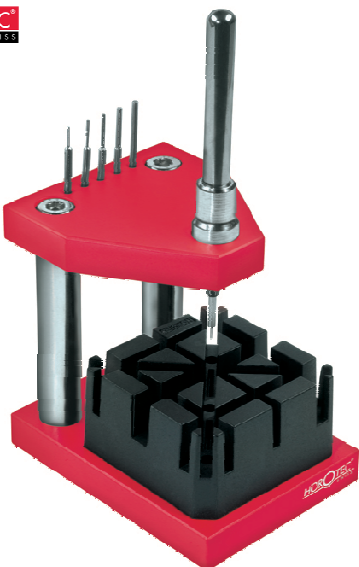


MSA	Size	Kg
10.500	60 x 80 x 110 mm	0.465

Press for rapidly fitting and removing the bracelet pins and screws. Stand accessories easily accessible. The vertical guide allows a perfect alignment with bracelet screws and pins. It is equipped with a device that holds the pins holder, leaving the operator hands free.

Contents :

- 1 press and 1 broach MSA10.500-A
- 1 handle MSA10.504
- 1 bracelet holder MSA10.501
- 12 blades MSA10.502-xxx (2 of each diameter)
- 11 pin punches MSA10.503-xxx : Ø 0.40, 0.60, 0.70, 0.80, 0.90, 1.00, 1.10, 1.20, 1.40, 1.50 and 2.00 mm
- 1 support MSA10.500-C
- 1 lower support MSA10.505
- 1 bracelet protector MSA10.500-E.



MSA	Size	Kg
10.499	60 x 80 x 110 mm	0.415

Press for fitting and removing the bracelet pins.
Simple version of press MSA10.500.

Contents :

- 1 press and 1 broach MSA10.500-A
- 1 bracelet holder MSA10.501
- 6 pin punches MSA10.503-xxx : Ø 0.40, 0.60, 0.80, 1.00, 1.50 and 2.00 mm
- 1 support MSA10.500-C.



Spare parts for MSA10.499 and MSA10.500 :

MSA	Item	Kg
10.499-03	Centering pin for base MSA10.499, Ø 4 x 17 mm	0.001
10.500-A	Broach for pin punch ; bore Ø 2 mm, length 80 mm	0.021
10.500-B	O-Ring gasket for broach MSA10.500-A (old version) and handle MSA10.504 ; Ø 3 mm, T 1.00	0.001
10.500-C	Support for the bracelet holder MSA10.501	0.003
10.500-D	Steel ball for broach MSA10.500-A and handle MSA10.504	0.001
10.500-E	Delrin® bracelet protector in slotted tulip shape	0.001
10.500-F	Maintaining ring (POM) of ball MSA10.500-D on broach MSA10.500-A	0.001
10.504	Knurled handle for blades MSA10.502-x ; length 84 mm	0.022
10.505	Lower support for blades MSA10.502-x and bracelet protector MSA10.500-E	0.013



MSA	Ø	Kg
10.502-080	0.80 mm	0.004
10.502-100	1.00 mm	0.004
10.502-120	1.20 mm	0.004
10.502-140	1.40 mm	0.004
10.502-160	1.60 mm	0.004
10.502-250	2.50 mm	0.006

Blade for press MSA10.500 (shank Ø 2 mm).

MSA	Quantity	Kg
10.502-A	2x 6 blades	0.006

Assortment of 12 blades for press MSA10.500.



MSA	Ø	Kg
10.503-040	0.40 mm	0.005
10.503-060	0.60 mm	0.005
10.503-070	0.70 mm	0.005
10.503-080	0.80 mm	0.005
10.503-090	0.90 mm	0.005
10.503-100	1.00 mm	0.005
10.503-110	1.10 mm	0.005
10.503-120	1.20 mm	0.005
10.503-140	1.40 mm	0.005
10.503-150	1.50 mm	0.005
10.503-200	2.00 mm	0.005

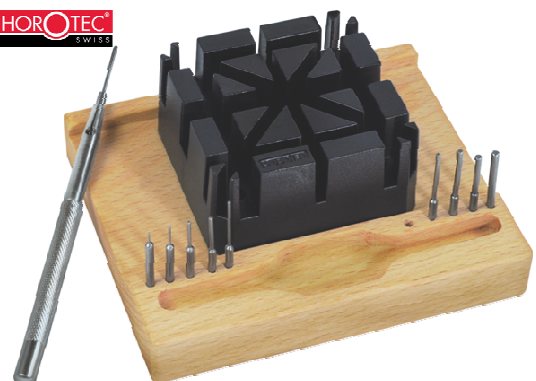
MSA10.503-A : **MSA10.503-B :** **MSA10.503-C :**

MSA10.503-040	MSA10.503-040	MSA10.503-040
MSA10.503-060	MSA10.503-060	MSA10.503-060
MSA10.503-070	MSA10.503-070	MSA10.503-080
MSA10.503-080	MSA10.503-080	MSA10.503-100
MSA10.503-090	MSA10.503-090	MSA10.503-150
MSA10.503-100	MSA10.503-100	MSA10.503-200
MSA10.503-110	MSA10.503-120	
MSA10.503-120	MSA10.503-140	
MSA10.503-140	MSA10.503-150	
MSA10.503-150	MSA10.503-200	
MSA10.503-200		

Pin punches for presses MSA10.499 et MSA10.500 + tools MSA10.510 and MSA10.511 (shank Ø 2 mm).

MSA	Quantity	Kg
10.503-A	11 pun punches	0.060
10.503-B	10 pun punches	0.050
10.503-C	6 pun punches	0.004

Assortment of pin punches for presses MSA10.499 et MSA10.500 + tools MSA10.510 and MSA10.511 (shank Ø 2 mm).

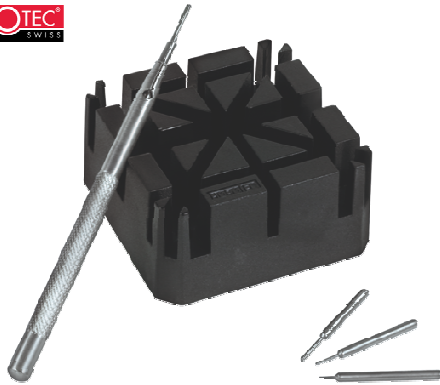


MSA	Size	Kg
10.510	95 x 80 x 36 mm	0.295

Pin punch tool with 1 universal bracelet holder on a wooden base.

Contents :

- 1 pin punch tool MSA10.510-A.
- 1 bracelet holder MSA10.501.
- 10 pin punches MSA10.503-xxx : Ø 0.40, 0.60, 0.70, 0.80, 1.00, 1.10, 1.20, 1.40, 1.50 and 2.00 mm
- 1 wooden base MSA10.510-B.



MSA	Kg
10.511	0.040

Pin punch tool with 1 universal bracelet holder.

Contents :

- 1 pin punch tool MSA10.510-A
- 1 bracelet holder MSA10.501
- 4 pin punches MSA10.503-xxx : Ø 0.40, 0.60, 0.80 and 1.00 mm.



MSA	Length	Ø reaming	Kg
10.510-A	80 mm	2.00 mm	0.029

Metal knurled pin punch tool.

Accessory for MSA10.510 and MSA10.511.



MSA	Packaging size	Kg
10.533	85 x 55 x 15 mm	0.040

Pin punch tool with anodised brass handle and stainless steel anvil.

Contents :

- 1 handle MSA10.527 compatible with all pin punches MSA10.503-x
- 11 pin punches MSA10.503-x : Ø 0.40, 0.60, 0.70, 0.80, 0.90, 1.00, 1.10, 1.20, 1.40, 1.50 and 2.00 mm.

Spare parts :

MSA	Item	Kg
10.503-040	Pin punch Ø 0.40 mm	0.005
10.503-060	Pin punch Ø 0.60 mm	0.005
10.503-070	Pin punch Ø 0.70 mm	0.005
10.503-080	(2) Pin punch Ø 0.80 mm	0.005
10.503-090	Pin punch Ø 0.90 mm	0.005
10.503-100	Pin punch Ø 1.00 mm	0.005
10.503-110	Pin punch Ø 1.10 mm	0.005
10.503-120	Pin punch Ø 1.20 mm	0.005
10.503-140	Pin punch Ø 1.40 mm	0.005
10.503-150	Pin punch Ø 1.50 mm	0.005
10.503-200	Pin punch Ø 2.00 mm	0.005
10.527	(2) Handle, Ø 6 x length 54 mm	0.011



(1)



(2)



MSA	Packaging size	Kg
10.528	85 x 55 x 15 mm	0.037

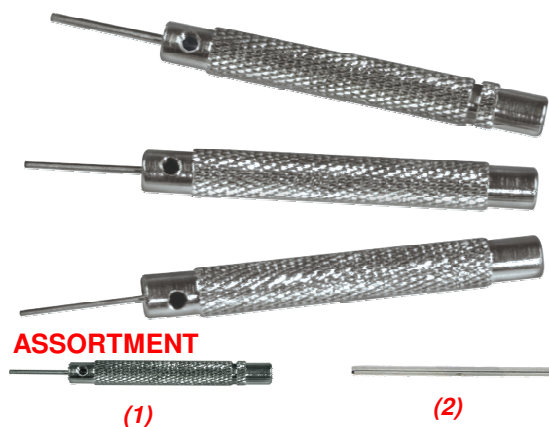
Assortment of pin punch tools for removing the bracelet pins.

Contents :

- 1 pin punch tool MSA10.528-070 with nickel plated brass handle Ø 5 mm, Ø 0.70 mm
- 1 pin punch tool MSA10.528-080 with nickel plated brass handle Ø 5 mm, Ø 0.80 mm
- 1 pin punch tool MSA10.528-100 with nickel plated brass handle Ø 5 mm, Ø 1.00 mm.

Spare parts :

MSA	Item	Kg
10.528-070	Pin punch tool with handle Ø 5 mm, Ø 0.70 mm	0.006
10.528-080	Pin punch tool with handle Ø 5 mm, Ø 0.80 mm	0.006
10.528-100	(1) Pin punch tool with handle Ø 5 mm, Ø 1.00 mm	0.006
10.529-070	Pin punch Ø 0.70 mm, total/usable length 22/15 mm	0.001
10.529-080	Pin punch Ø 0.80 mm, total/usable length 22/15 mm	0.001
10.529-100	(2) Pin punch Ø 1.00 mm, total/usable length 22/15 mm	0.001
10.529-V	(3) Screw for pin punch tools	0.001



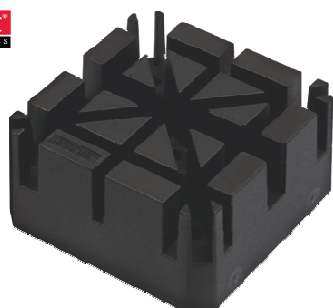
ASSORTMENT

MSA	Kg
10.508	0.029

Assortment of 3 pin punches tools (Ø 0.60, 0.80 and 1.00 mm) for removing the bracelet pins.

Spare parts :

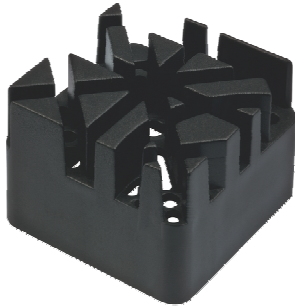
MSA	Item	Kg
10.508-060	(1) Tool with handle Ø 5.20, L52.60, pin Ø 0.60 mm	0.006
10.508-080	Tool with handle Ø 5.20, L52.60, pin Ø 0.80 mm	0.006
10.508-100	Tool with handle Ø 5.20, L52.60, pin Ø 1.00 mm	0.006
10.509-060	(2) Pin punches Ø 0.60 mm	0.001
10.509-080	Pin punches Ø 0.80 mm	0.001
10.509-100	Pin punches Ø 1.00 mm	0.001



MSA	Size	Kg
10.501	52 x 52 x 25 mm	0.022

Universal black plastic bracelet holder, with 9 holes and 8 slots of 2.8 to 6.3 mm.

Accessory for MSA10.499, 10.500, 10.510 and 10.511.



MSA	Size	Kg
10.507	55 x 55 x 40 mm	0.030

Black plastic bracelet holder, 22 slots of 3.5 to 9.0 mm.



MSA	Size	Kg
10.519	50 x 45 x 40 mm	0.105

Bracelet holder vice with screw.

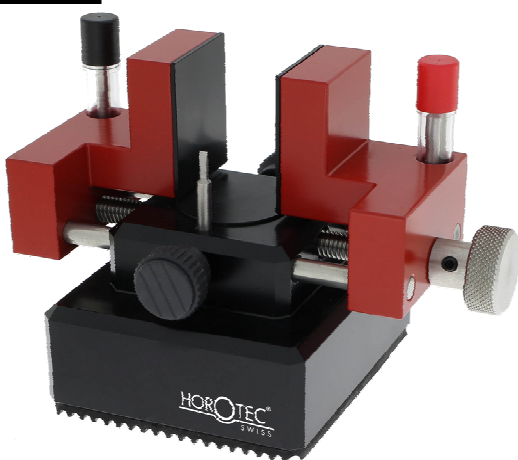
- Maximum bracelet thickness : 10 mm
- Useful dimensions : length 49 mm and height 24 mm
- Suitable for presses MSA10.499 and 10.500 illustrated on page 10-2.



MSA	Size	Kg
10.513	55 x 35 x 22 mm	0.050

Bracelet holder vice with screw.

- Maximum bracelet thickness : 9.50 mm
- Useful dimensions : length 35 mm and height 12 mm
- Suitable for presses MSA10.499 and 10.500 illustrated on page 10-2.



MSA	Size	Kg
10.010	110 x 70 x 75 mm	1.100

Multifunctional 3rd hand vice, case holder and bracelet holder.

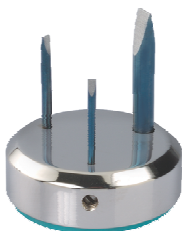
Composition :

- 1 base with table equipped with a POM protection Ø 25 mm
- 1 removable and sliding vice for tightening cases and bracelets ; maximum opening 30 mm
- 4 stainless steel blades (hardening 57 HRC) Ø 1.00, 1.40, 1.80 and 3.00 mm. Shank Ø 3 mm.

Spare parts :

MSA	Item	Kg
10.010-100	Blade Ø 1.00 mm	0.005
10.010-140	Blade Ø 1.40 mm	0.005
10.010-180	Blade Ø 1.80 mm	0.005
10.010-300	Blade Ø 3.00 mm	0.005
10.010-A	Maintaining screw	0.010
10.010-B	Blade spring	0.001





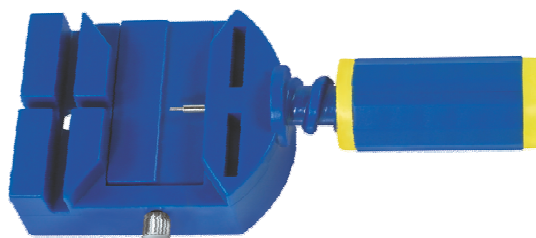
MSA	Size	Kg
10.520	25 x 25 x 27 mm	0.037

Small tool for bracelet screws.
 - 3 blades Ø 1.00, 1.40 and 3.00 mm
 - Metal anti-skid base.



MSA	Size	Kg
10.007	105 x 60 x 60 mm	0.355

Tool to keep plastic band watches opened.
 Give free hands to users for easy works in the watch.
 Non-skid aluminium base and curved Delrin® die Ø 39 mm (also for domed crystals).

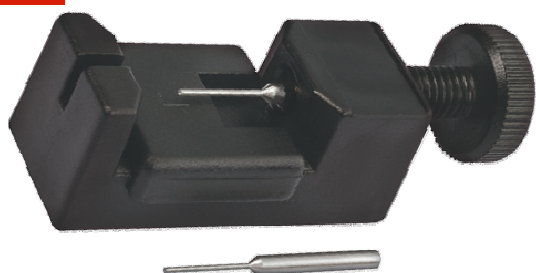


MSA	Size	Kg
10.531	110 x 50 x 25 mm	0.066

Tool for removing bracelet pins.

Spare part :

MSA	Item	Kg
10.531-A	(1) Pin punch Ø 0.80 mm, shank Ø 1.90mm	0.003



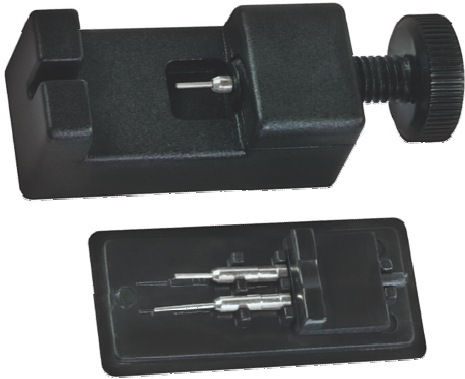
MSA	Size	Kg
10.005	60 x 20 x 25 mm	0.015

Small black plastic tool for removing the bracelet pins.
 Delivered with 2 pin punches Ø 0.80 mm.

Spare part :

MSA	Item	Kg
10.005-A	(1) Pin punches Ø 0.80, body Ø 2.50, length 31.40 mm	0.001





MSA	Size	Kg
10.532	55 x 22 x 25 mm	0.016

Small black plastic tool for removing the bracelet pins.
 Delivered with 3 pin punches Ø 0.80 mm (2x length 17 mm and 1x length 20 mm).

Spare parts :

MSA	Item	Kg
10.532-A	(1) Pin punches Ø 0.80, body Ø 2.50, length 17 mm	0.004
10.532-B	(2) Pin punches Ø 0.80, body Ø 2.50, length 20 mm	0.004

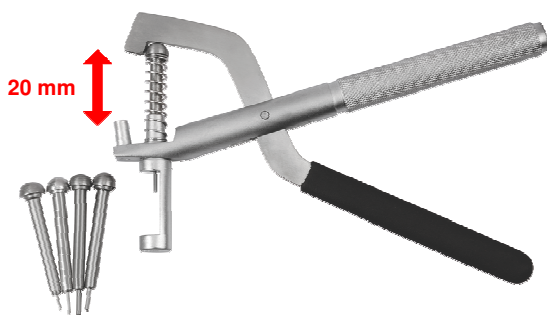


MSA	Length	Kg
10.003	145 mm	0.089

Combination pliers for fitting and removing the bracelet pins.
 Delivered with 1 pin punch holder + 1 mounted pin punch and 5 pin punches Ø 0.80 mm.

Spare parts :

MSA	Item	Kg
10.003-A	(1) Pin punch holder + 1 pin punch, length 36 mm, shank Ø 4 mm	0.001
10.003-B	(2) Pin punch Ø 0.80 mm, length 13.50 mm, shank Ø 1.50 mm	0.001

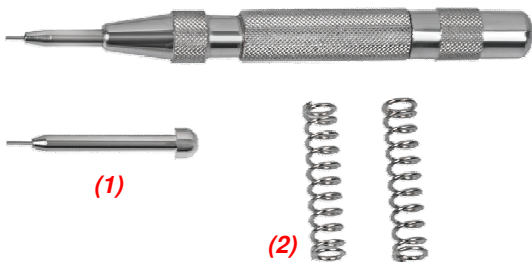


MSA	Length	Kg
10.006	150 mm	0.295

Combination pliers for fitting and removing the bracelet pins.
 Delivered with 5 pin punches Ø 0.60, 0.80, 1.00, 1.20 and 1.50 mm.

Spare parts :

MSA	Item	Kg
10.004-060	Pin punches Ø 1.50, length 49.00 mm	0.001
10.004-080	Pin punches Ø 1.20, length 48.50 mm	0.001
10.004-100	(1) Pin punches Ø 1.00, length 47.50 mm	0.001
10.004-120	Pin punches Ø 0.80, length 47.00 mm	0.001
10.004-150	Pin punches Ø 0.60, length 47.00 mm	0.001



MSA	Size	Kg
10.008	Ø 11.5 x 130 mm	0.072

Shock tool for removing the bracelet pins.
 Delivered in a plastic pouch with :
 - 1 pin MSA10.008-A
 - 2 springs MSA10.008-B.

Spare parts :

MSA	Item	Kg
10.008-A	(1) Pin Ø 0.80 mm	0.004
10.008-B	(2) Spring Ø 8.00 x 38.00 mm	0.004

Spring bars bending tool.



MSA	Size	Kg
10.311	130 x 30 x 80 mm	0.120

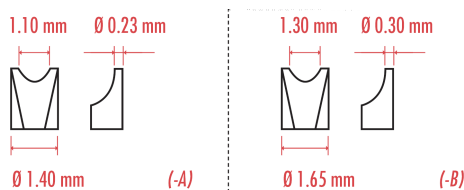
Tool with lever of 110 mm allowing to easily bend some of the most thickest steel spring bars.
Equipped with 2 spring bar rooms to give wished bending according to length, without damaging the spring bar.

Spare part :

MSA	Item	Kg
10.311-08	(1) Lever spring	0.001



Spring bars tools.



MSA	Length	Kg
10.009	130 mm	0.077

Black tool for spring bars with 2 hardened stainless steel forks MSA10.009-B (HRC 54 ±2).

Spare parts :

MSA	Item	Kg
10.009-A	Fork, width 1.30 x thickness 0.30 mm	0.002
10.009-B	Fork, width 1.10 x thickness 0.23 mm	0.002



MSA	Material	Length	Kg
10.306	Stainless steel, sand-blasted body and mirror polished tips	120 mm	0.022
10.307	Stainless steel	120 mm	0.022

Tool for fitting and removing spring bars.
Specially made to shorten both ends of the spring bars at the same time and insert the well-adjusted metal bracelet between watch case legs.
The opening of the tips is sufficient to allow the tool to be used with any spring bars lengths.
Tips thickness : 0.50 mm.

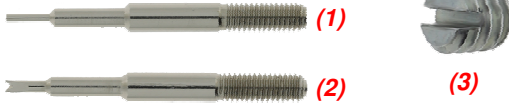
SPRING BARS TOOLS



MSA	Length	Kg
10.309	140 mm	0.021

Tool for fitting and removing spring bars.
 - Aluminium anodised red handle Ø 8 mm
 - Stainless steel tip and fork.

The fixing of the tips and forks on the handle is secured by 2 stainless steel M2 screws.



Spare parts :

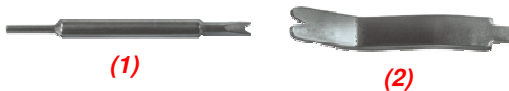
MSA	Item	Kg
10.309-A	(1) Tip Ø 0.80 mm, threading M3	0.006
10.309-B	(2) Fork width 1.20 mm, threading M3	0.006
10.309-V	(3) Screw, threading M2	0.001



MSA	Length	Kg
10.313	135 mm	0.034

Tool for fitting and removing spring bars.
 - Aluminium anodised black handle Ø 8 mm
 - Stainless steel reversible tip and fork easily interchangeable due to maintaining chucks.

Spare parts :



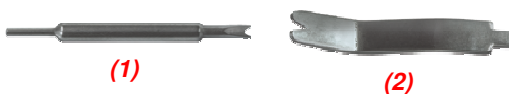
MSA	Item	Kg
10.313-A	(1) Reversible tip Ø 0.80 and width 1.20 mm	0.006
10.313-B	(2) Fork width 4.00 mm	0.006



MSA	Length	Kg
10.302	135 mm	0.034

Tool for fitting and removing spring bars.
 - Knurled steel handle Ø 7 mm
 - Steel tips easily interchangeable due to maintaining chucks.

Spare parts :



MSA	Item	Kg
10.302-A	(1) Reversible tip Ø 0.80 mm and width 1.20 mm	0.004
10.302-B	(2) Fork width 4.00 mm	0.004



MSA	Length	Kg
10.304	147 mm	0.025

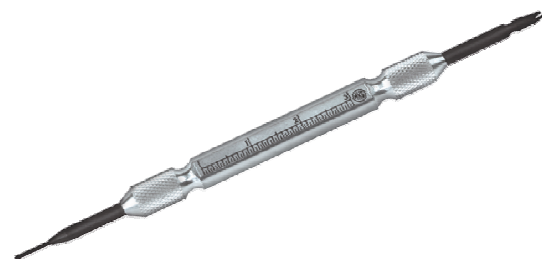
Tool for fitting and removing spring bars.
 - Aluminium hexagonal handle Ø 10 mm with 2 graduated scales in millimetres and inches
 - Interchangeable hardened steel tips.

** Delivered with tip MSA10.304-A and fork MSA10.304-B*

Spare parts :



MSA	Item	Kg
10.304-A *	(1) Tip Ø 0.80 mm	0.001
10.304-B *	(2) Fork width 3.00 mm	0.001
10.304-C	Fork width 1.20 mm	0.001



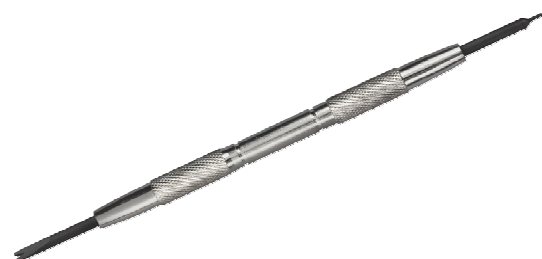
MSA	Length	Kg
10.301	105 mm	0.007

Tool for fitting and removing spring bars.
 - Knurled aluminium handle Ø 6 mm with graduated scale in mm
 - Interchangeable steel tips.



Spare parts :

MSA	Item	Kg
10.301-A	(1) Tip Ø 0.70 mm	0.006
10.301-B	(2) Fork width 2.00 mm	0.006



MSA	Length	Kg
10.303	145 mm	0.028

Tool for fitting and removing spring bars.
 - Knurled steel handle
 - Interchangeable hardened steel tips.

* Delivered with tip MSA10.304-A and fork MSA10.304-B



Spare parts :

MSA	Item	Kg
10.304-A *	(1) Tip Ø 0.80 mm	0.001
10.304-B *	(2) Fork width 3.00 mm	0.001
10.304-C	Fork width 1.20 mm	0.001